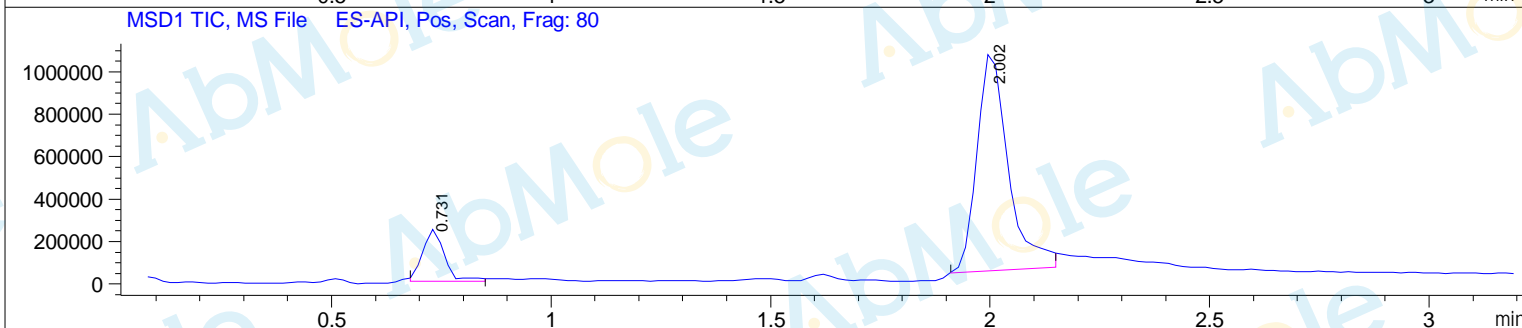
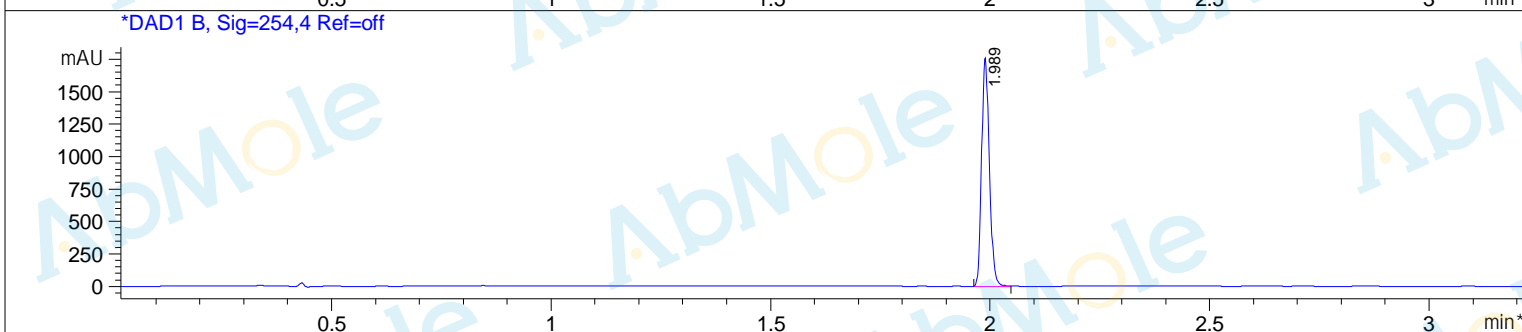
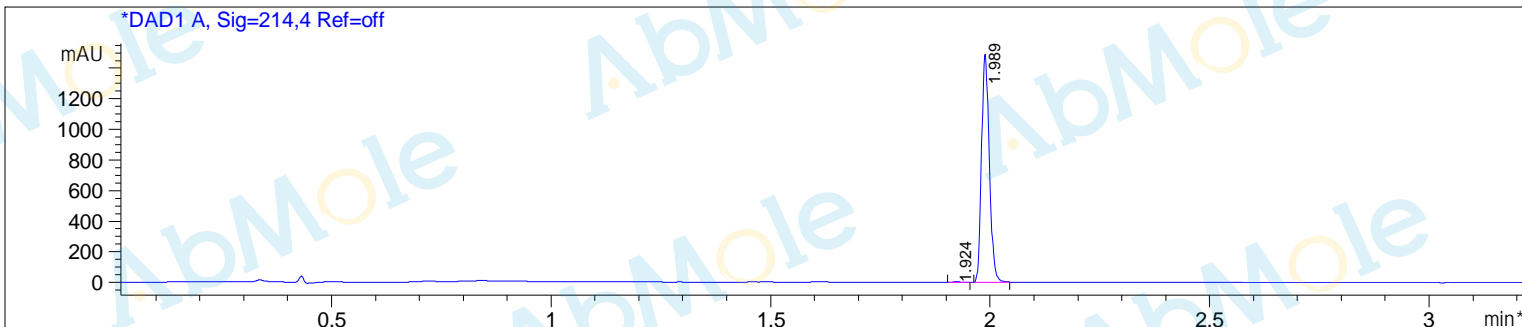


Sample Name : M9624-KN-93 hydrochloride-01
Acq. Operator : C22
Spec. Reported : MS Integration
Acq. Method : D:\METHODS\1-POS-3MIN.M
Analysis Method : D:\METHODS\1-POS-3MIN.M
Sample Info : Easy-Access Method: '1-POS-3MIN.M'
Method Info : Column:Xbridge C18(2) (4.6x 50 mm, 3.5um)
 Mobile phase: H2O(10 mmol NH4HCO3) (A) / ACN(B)
 Elution program: Gradient from 5 to 95% of B in1.5min at 1.8ml/min
 Temperature: 50 °C
 Detection: UV (214 , 4 nm) and MS (ESI, Pos mode ,103 to 800 amu)



Integration Results for DAD1 A, Sig=214,4 Ref=off

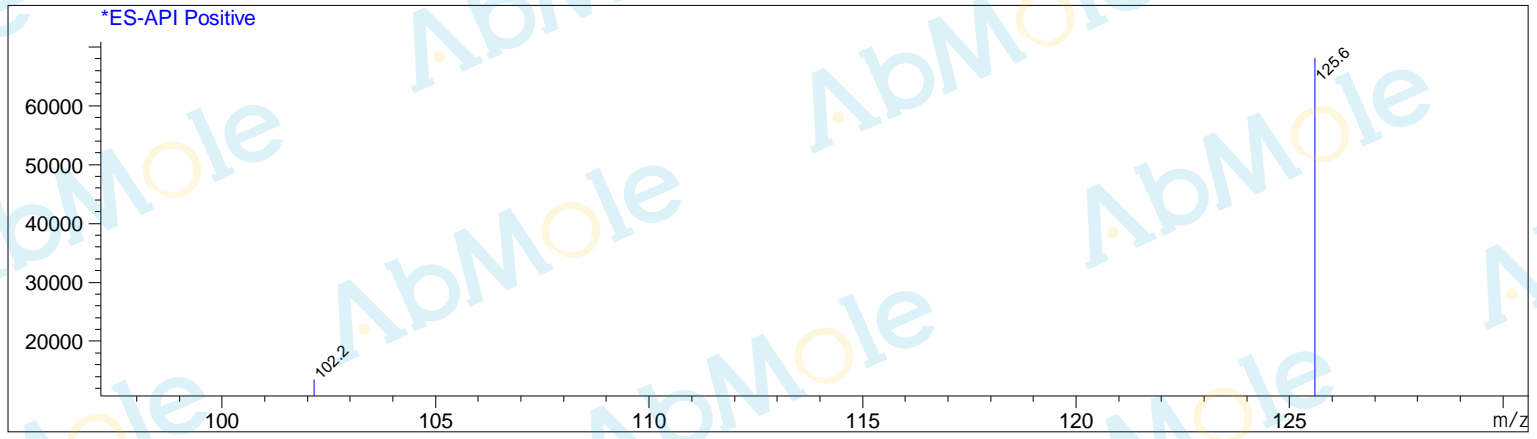
RetTim	Width	Area	Height	Area%
1.92	0.02	6.85	5.80	0.37
1.99	0.02	1856.06	1495.92	99.63

Integration Results for DAD1 B, Sig=254,4 Ref=off

RetTim	Width	Area	Height	Area%
1.99	0.02	2172.91	1762.04	100.00

Ret. Time: 0.73

<<<< POSITIVE SPECTRA >>>>



Ret. Time: 2.00

